

Sand Pails
Design by Sandy Garbrandt

The DMC floss used in this design can be purchased on our Janlynn.com website for 39 cents a skein.



54w x 53h Stitches

11 Count, 4-7/8" w x 4-3/4" h

14 Count 3-3/4" w x 3-3/4" h

18 Count, 3" w x 2-7/8" h

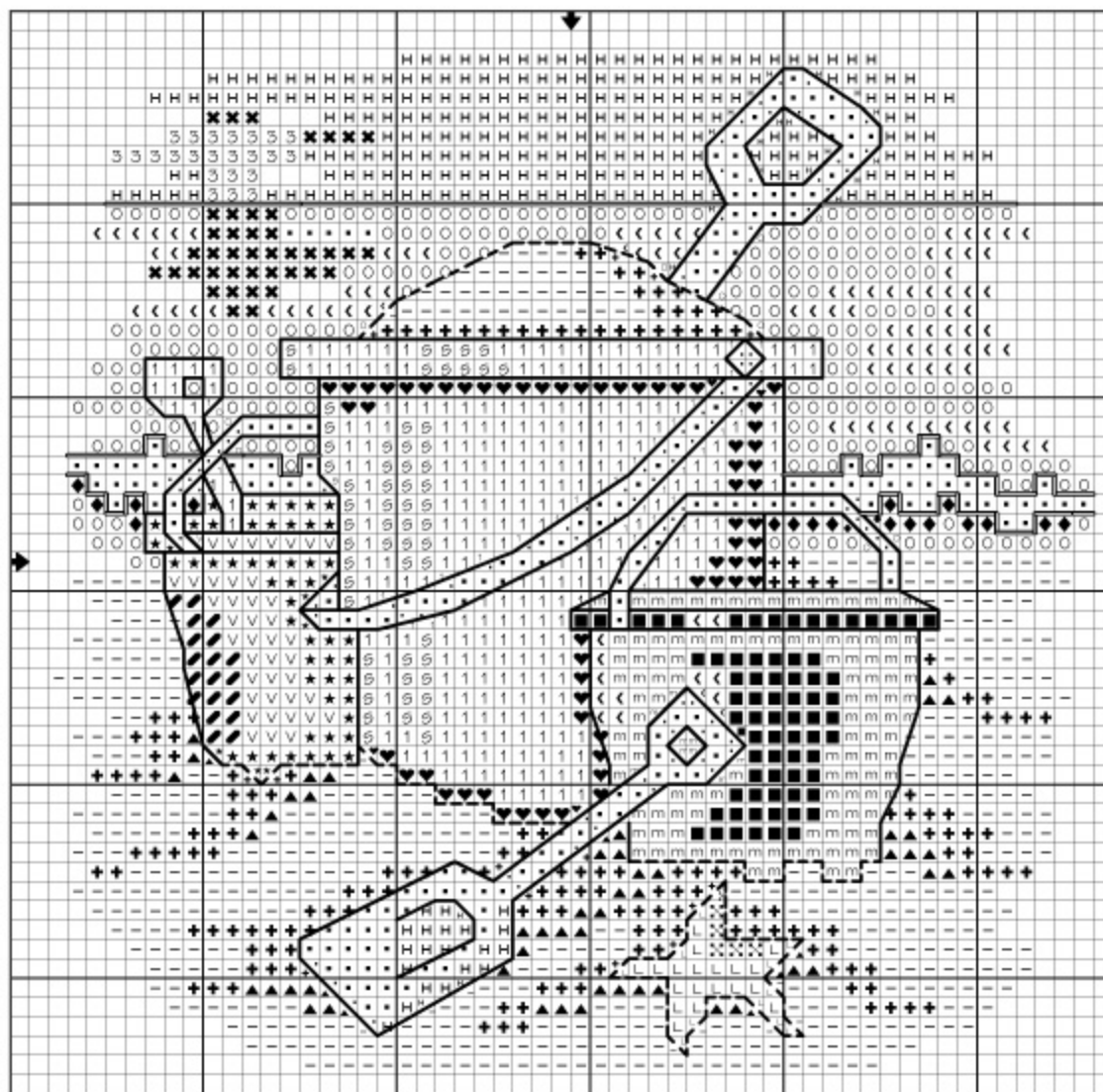
14 / 28 Count

Cross stitch - two ply

DMC	Color	DMC	Color
1	321 Christmas Red	+	3045 Yellow Beige-Dark
5	351 Coral	-	3047 Yellow Beige- Light
▲	420 Hazelnut Brown-Dark	×	3078 Golden Yellow-Vy Light
●	472 Avocado Green-Ultr-Light	○	3755 Baby Blue
◀	598 Turquoise-Light	н	3840 Lavender Blue- Light
★	699 Christmas Green	м	3847 Teal Green-Dark
∨	703 Chartreuse	■	3849 Teal Green- Light
3	726 Topaz-Light	L	3854 Autumn Gold-Medium
◆	798 Delft Blue-Dark	⊗	3855 Autumn Gold-Light
♥	815 Garnet-Medium	•	White White

Back stitch

—	310 Black
---	420 Hazelnut Brown-Dark
○	798 Delft Blue-Dark



This design is not to be duplicated, sold, modified or redistributed in any medium, including scanning and posting on the internet without written permission from The Janlynn Corporation.