

# EASTER BASKET

*The DMC floss used in this design can be purchased on our Janlynn.com website for 39 cents a skein.*

**Design Size: 52w x 53h Stitches**

11 Count, 3-3/4" w x 4-3/4" h

14 Count, 3" w x 3-3/4" h

18 Count, 2-1/4" w x 2-7/8" h

**14 / 28 count fabric**

Cross stitch - **two** ply

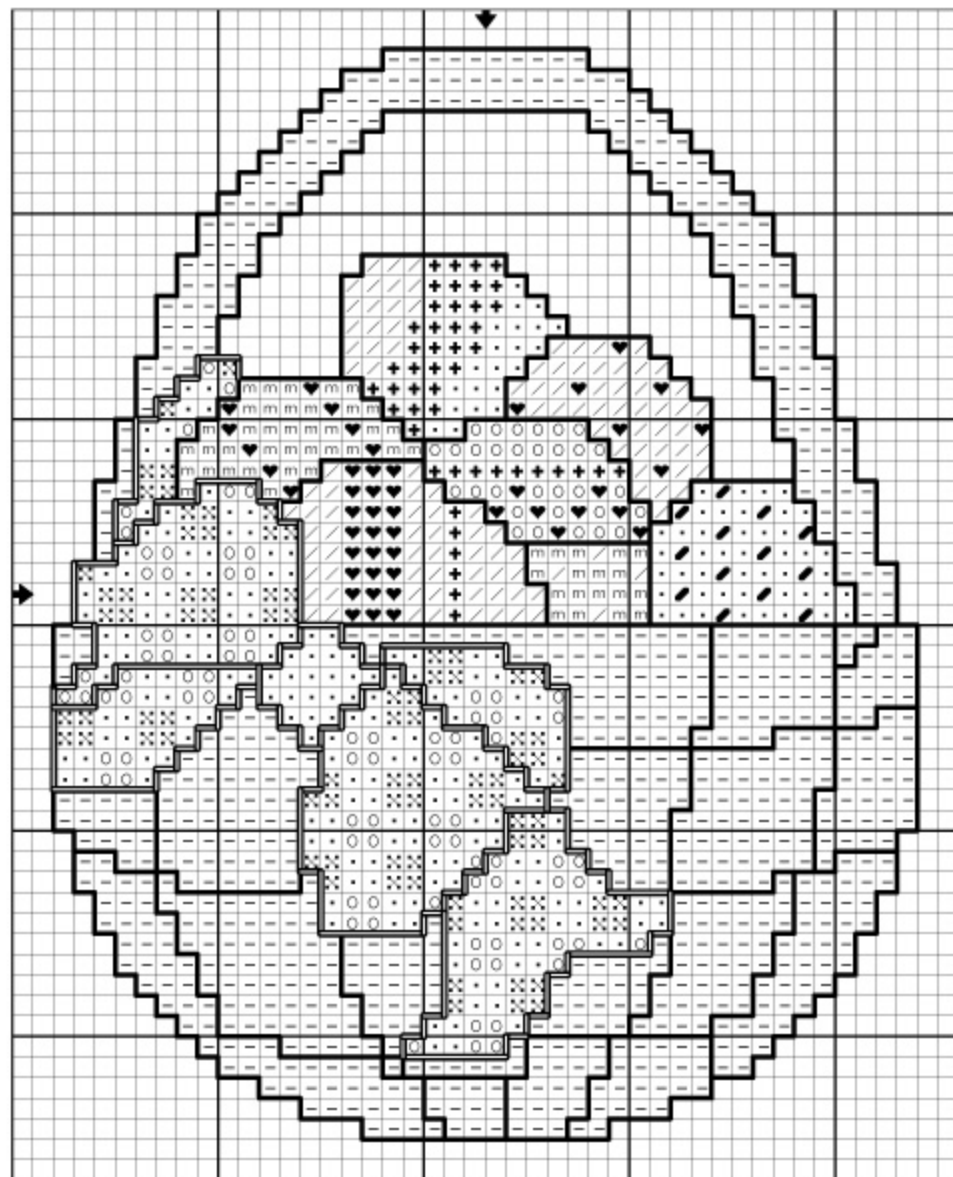
Back stitch - **one** ply



- |   | DMC   | Color            |
|---|-------|------------------|
| ● | 309   | Rose-Dark        |
| + | 322   | Baby Blue-Dark   |
| - | 437   | Tan-Light        |
| ♥ | 552   | Violet-Medium    |
| / | 744   | Yellow-Pale      |
| . | 776   | Pink-Medium      |
| ⊗ | 899   | Rose-Medium      |
| m | 959   | Sea Green-Medium |
| ○ | White | White            |

**Back stitch**

- |   |     |             |
|---|-----|-------------|
| — | 309 | Rose-Dark   |
| — | 434 | Brown-Light |



This design is not to be duplicated, sold, modified or redistributed in any medium, including scanning and posting on the internet without written permission from The Janlynn Corporation.

The Janlynn Corporation 2070 Westover Road, Chicopee, MA 01022 USA

800-445-5565 (USA & Canada) ~ 413-206-0002 (International) www.janlynn.com ~ Email: customerserv@janlynn.com